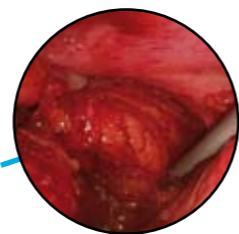
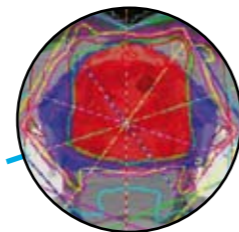
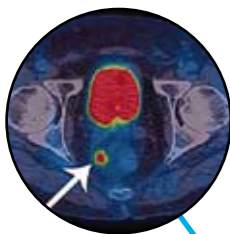


PROGRAMME

* TUESDAY 26 JUNE 2012 *

09.00 – 10.30	Genetic susceptibility and basic research <i>Chairs: Jan Paul Medema and Marc v.d. Vijver</i>	
	* Hereditary syndromes with high risk of colorectal cancer	MONIQUE VAN LEERDAM
	* Methylation in colorectal cancer	MANON VAN ENGELAND
	* Tumour stem cell	JAN PAUL MEDEMA
	* Microenvironment	CHRISTIANNE BUSKENS
10.30 – 11.00	Coffee break	
11.00 – 12.30	Neo-adjuvant treatment – rectal cancer <i>Chair: Vincenzo Valentini and Kees Punt</i>	
	* 5x5 Gy with short and long interval to surgery	JOACHIM WIDDER
	* Individualized treatment based on multidisciplinary team discussion	VINCENZO VALENTINI
	* Imaging for response monitoring	REGINA BEETS-TAN
	* Complete response after chemoradiotherapy – no TME surgery necessary?	EELCO DE GRAAF
12.30 – 13.00	Lunch	



PROGRAMME

* TUESDAY 26 JUNE 2012 *

13.30 – 15.00	Controversies <i>Chairs: Soren Laurberg and Evelien Dekker</i>	
	* PRO-CON Nationwide FIT-screening	CARLO SENORE/JAAP STOKER
	* PRO-CON APR in supine position	HARM RUTTEN/TORBJÖRN HOLM
	* PRO-CON stent as bridge to surgery	MIKE PARKER/WILLEM BEMELMAN
15.00 – 15.20	Tea break	
15.20 – 16.50	Locoregional recurrence <i>Chairs: Victor Verwaal and Harm Rutten</i>	
	* Multimodality treatment of local recurrence in colorectal cancer	TORBJÖRN HOLM
	* Animal model of peritoneal carcinomatosis	IGNACE DE HINGH
	* Patient selection and long-term outcome of cytoreduction and HIPEC	BRENDON MORAN
	* Is there an indication for adjuvant HIPEC?	KURT VAN DER SPEETEN
16.50	Closure	

* GENERAL INFORMATION *

REGISTRATION:

The registration fee covers course participation, coffee/tea, lunch and cocktails. Registration can be done via the EPGs web site only, www.epgs.nl. Letter of confirmation will be sent to your email address.

REGISTRATION FEE:

Physician: € 225 before 1 May 2012; € 275 after 1 May 2012
Nurse/Trainee: € 125 before 1 May 2012; € 175 after 1 May 2012

Payment can be done via the website (secure payment page) or by bank, at EPGs a/c 54.69.46.275, ABN-AMRO Bank, Amsterdam, Netherlands, IBAN no.: NL29ABNA0546946275; BIC no.: ABNA NL2A.

CANCELLATION POLICY

We will reimburse the registration fee minus € 25,- administration costs upon receipt of written cancellation before 15 May 2012.

VENUE & LANGUAGE:

The symposium will be held at the Academic Medical Center, Meibergdreef 9, Amsterdam, lecture hall 5. Routing will be clearly marked from all entrances of the hospital. The congress language will be English.

ACCREDITATION:

At the end of the course all participants will receive a certificate of attendance with EU CME accreditation.

BIG REGISTRATION:

(Dutch participants only)
Please fill in your full BIG number (11 digits) in the registration form. The EPGs will register you in the GAIA system after the conference

PARKING & ROUTING:

Parking is free on P5 and P6. Please do not use the parking lot in front of the hospital, this parking lot is for patients and their visitors and parking time will be charged. P2 is our covered P-garage and is also an option. Parking time, however, will be charged. Routing to the AMC will be clearly indicated in your confirmation letter.

INFORMATION:

For further information, please contact Joy Goedkoop or Jacqueline van der Woude, EPGs-AMC, Meibergdreef 9, NL-1105 AZ Amsterdam. Tel. +31 (0)20 566 39 26/64 68 or e-mail: epgs@amc.nl.

On line registration only via web site www.epgs.nl

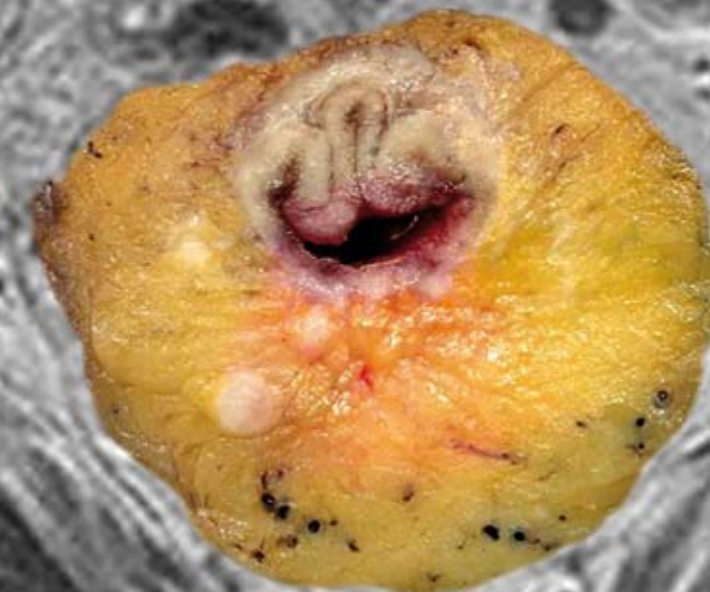


* FIRST ANNOUNCEMENT *

UPDATE ON COLORECTAL CANCER

ACADEMIC MEDICAL CENTER, LECTURE HALL 5

25 & 26 JUNE 2012



Dear colleagues,

Colorectal cancer (CRC) is the second most prevalent cause of cancer-related mortality in the Western world. The multidisciplinary team for patients with colorectal cancer, consisting of gastroenterologists, surgeons, radiologists, radiotherapists and oncologists at the Academic Medical Center in Amsterdam is proud to organize a unique congress on this clinically relevant and important disease.

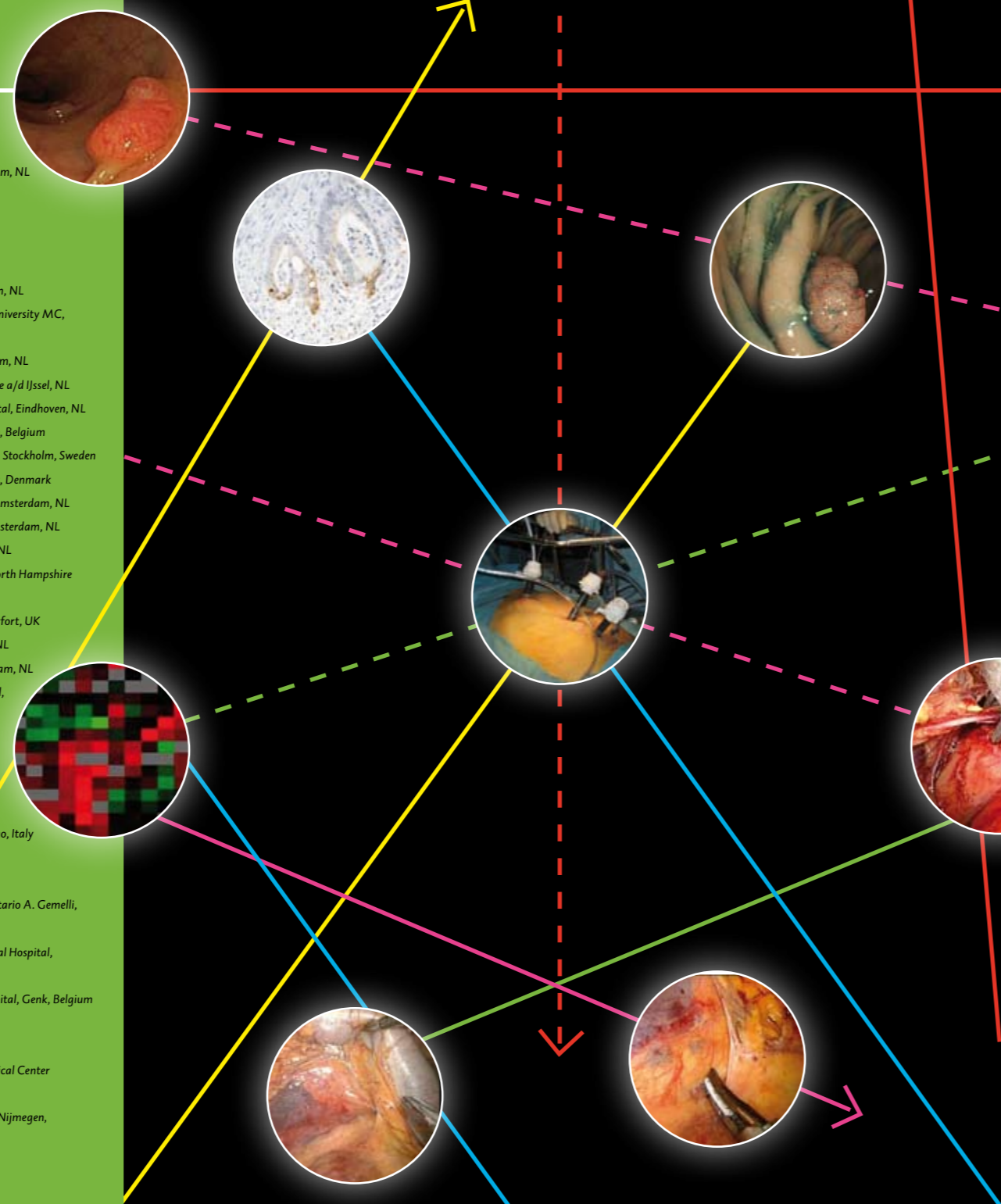
During 2 days various aspects of diagnostics, treatment and prevention of colorectal cancer will be discussed. Furthermore, translational research and its possible clinical consequences are put in perspective and controversial issues lively debated by numerous experts from the Netherlands and abroad. We believe this congress is of utmost interest to both clinical specialists as well as basic researchers with an interest in translational science.

We hope to welcome you in June 2012 at this exciting event!

On behalf of the organizing committee
Evelien Dekker & Pieter Tanis

Faculty:

- R.G.H. Beets-Tan** *Radiology, Maastricht University MC, Maastricht, NL*
- W.A. Bemelman** *Surgery, AMC, Amsterdam, NL*
- L. Blomqvist** *Radiology, Karolinska Institute, Stockholm, Sweden*
- P. Bossuyt** *KEBB, AMC, Amsterdam, NL*
- C.J. Buskens** *Surgery, AMC, Amsterdam, NL*
- E. Dekker** *Gastroenterology, AMC, Amsterdam, NL*
- M. van Engeland** *Pathology, Maastricht University MC, Maastricht, NL*
- P. Fockens** *Gastroenterology, AMC, Amsterdam, NL*
- E. de Graaf** *Surgery, IJsselland Hospital, Capelle a/d IJssel, NL*
- I.H.J.T. de Hingh** *Surgery, Catharina Hospital, Eindhoven, NL*
- A. d'Hoore** *Surgery, UZ Gasthuisberg, Leuven, Belgium*
- T. Holm** *Colorectal Surgery, Karolinska Institute, Stockholm, Sweden*
- S. Laurberg** *Surgery, Aarhus Hospital, Aarhus, Denmark*
- M. van Leerdaam** *Gastroenterology, NKI, Amsterdam, NL*
- J.P. Medema** *Molecular Medicine, AMC, Amsterdam, NL*
- G.A. Meijer** *Pathology, VUMC, Amsterdam, NL*
- B. Moran** *Colorectal Surgery, Basingstoke & North Hampshire Hospital, Basingstoke, UK*
- M. Parker** *Surgery, Darent Valley Hospital, Darford, UK*
- C. Punt** *Medical Oncology, AMC, Amsterdam, NL*
- D.J. Richel** *Medical Oncology, AMC, Amsterdam, NL*
- E. Rullier** *Surgery, Bordeaux University Hospital, Bordeaux, France*
- H. Rutten** *Surgery, Catharina Hospital, Eindhoven, NL*
- B. Saunders** *Gastroenterology, St. Mark's, London, UK*
- C. Senore** *Cpo-Cancer Prevention Center, Torino, Italy*
- J. Stoker** *Radiology, AMC, Amsterdam, NL*
- P.J. Tanis** *Surgery, AMC, Amsterdam, NL*
- V. Valentini** *Radiotherapy, Policlinico Universitario A. Gemelli, Rome, Italy*
- R. Valori** *Gastroenterology, Gloucestershire Royal Hospital, Gloucester, UK*
- K. Van Der Speeten** *Surgery, St. Jan Hospital, Genk, Belgium*
- V. Verwaal** *Surgery, NKI, Amsterdam, NL*
- M.J. v.d. Vijver** *Pathology, AMC, NL*
- J. Widder** *Radiation Oncology, University Medical Center Groningen, Groningen, NL*
- H. de Wilt** *Surgery, University Medical Center Nijmegen, Nijmegen, NL*



PROGRAMME

* MONDAY 25 JUNE 2012 *

- 09.00 Opening
- 09.20 – 10.30 Diagnostics
Chairs: Paul Fockens and Jaap Stoker
- * Quality assurance in endoscopy
- * Endoscopy – advanced techniques
- * Imaging for staging of colorectal cancer
- * Pathology – prognostic markers
- * Video lecture (10 min):
New endoscopic techniques
- 10.30 – 11.00 Coffee break
- 11.00 – 12.30 Screening and surveillance
Chairs: Evelien Dekker and Brian Saunders
- * Modalities for population screening
- * Risk profiling
- * Molecular testing and clinical implications
- * Surveillance of the operated patient
- * Video lecture (10 min):
Endoscopy in FAP and Lynch
- 12.30 – 13.30 Lunch

ROLAND VALORI
BRIAN SAUNDERS
LENNART BLOMQVIST
MARC V.D. VIJVER

CARLO SENORE
PATRICK BOSSUYT
GERRIT MEIJER
EVELIEN DEKKER



PROGRAMME

* MONDAY 25 JUNE 2012 *

- 13.30 – 15.00 Controversies in colorectal surgery
Chairs: Willem Bemelman and Eric Rullier
- * Endoscopy versus surgery for colorectal adenomas
- * Tailored approach in abdomino-perineal resection – oncological and reconstructive perspectives
- * Smaller holes, bigger surgery
- * Perineal approaches for distal rectal cancer – timing, positioning, extend
- * Video lecture (10 min):
Laparoscopic APR – perineal first in prone position
- 15.00 – 15.20 Tea break
- 15.20 – 16.50 Metastatic disease
Chairs: Dick Richel and Pieter Tanis
- * What to do with the symptomatic and asymptomatic primary tumour in incurable stage IV disease?
- * Long-term systemic treatment strategies: continuation of therapy vs drug free intervals vs low-dose intervals
- * Role of targeted agents
- * Timing of multimodality treatment with curative intent in stage IV disease
- * Video lecture (10 min):
Synchronous resection primary tumour and metastatic disease
- 16.50 Closure

PAUL FOCKENS
SOREN LAURBERG
ANDRE D'HOORE
ERIC RULLIER

HANS DE WILT
DICK RICHEL
KEES PUNT
PIETER TANIS

