

GENERAL INFORMATION

REGISTRATION

The registration fee covers course participation, coffee/tea, lunch and cocktails.
Registration *only* via the EPGs web site, www.epgs.nl. Letter of confirmation will be sent to your email address.

REGISTRATION FEE

Course € 150,-.

Payment can be done via the website (secure payment page) or by bank, at EPGs a/c 54.69.46.275, ABN-AMRO Bank, Amsterdam, Netherlands, IBAN no.: NL29ABNA0546946275; BIC no.: ABNA NL2A.
Registration fee must have reached the EPGs before 1 September 2012.
We will reimburse the registration fee minus € 25 administration costs upon receipt of written cancellation before 15 August 2012.

VENUE & LANGUAGE

The symposium will be held at the Academic Medical Center, Meibergdreef 9, Amsterdam, lecture hall 5. Routing will be clearly marked from all entrances of the hospital. The congress language will be English.

ACCREDITATION

All participants will receive a certificate of attendance from the EPGs at the end of the course with EU CME accreditation.

PARKING & ROUTING

Parking is free on P5 and P6. Please do not use the parking lot in front of the hospital, this parking lot is specially for patients and their visitors and parking time will be charged. P2 is our covered P-garage and is also an option. Parking time, however, will be charged. Routing to the AMC will be clearly indicated in your confirmation letter.

INFORMATION

For further information, please contact Joy Goedkoop or Jacqueline van der Woude, EPGs-AMC, Meibergdreef 9, NL-1105 AZ Amsterdam. Tel. +31 (0)20 020 566 39 26/64 68 or e-mail: epgs@amc.nl.

On line registration only via web site www.epgs.nl

7 SEPTEMBER 2012, AMC, LECTURE HALL 5

Hepatocellular Carcinoma Diagnosis and Treatment

ORGANIZING COMMITTEE

Ulrich Beuers, Yung Nio, Jaap Stoker



GENERAL INFORMATION

REGISTRATION

The registration fee covers course participation, coffee/tea, lunch and cocktails.
Registration *only* via the EPGs web site, www.epgs.nl. Letter of confirmation will be sent to your email address.

REGISTRATION FEE

Course € 150,-.

Payment can be done via the website (secure payment page) or by bank, at EPGs a/c 54.69.46.275, ABN-AMRO Bank, Amsterdam, Netherlands, IBAN no.: NL29ABNA0546946275; BIC no.: ABNA NL2A.
Registration fee must have reached the EPGs before 1 September 2012.
We will reimburse the registration fee minus € 25 administration costs upon receipt of written cancellation before 15 August 2012.

VENUE & LANGUAGE

The symposium will be held at the Academic Medical Center, Meibergdreef 9, Amsterdam, lecture hall 5. Routing will be clearly marked from all entrances of the hospital. The congress language will be English.

ACCREDITATION

All participants will receive a certificate of attendance from the EPGs at the end of the course with EU CME accreditation.

PARKING & ROUTING

Parking is free on P5 and P6. Please do not use the parking lot in front of the hospital, this parking lot is specially for patients and their visitors and parking time will be charged. P2 is our covered P-garage and is also an option. Parking time, however, will be charged. Routing to the AMC will be clearly indicated in your confirmation letter.

INFORMATION

For further information, please contact Joy Goedkoop or Jacqueline van der Woude, EPGs-AMC, Meibergdreef 9, NL-1105 AZ Amsterdam. Tel. +31 (0)20 020 566 39 26/64 68 or e-mail: epgs@amc.nl.

On line registration only via web site www.epgs.nl

7 SEPTEMBER 2012, AMC, LECTURE HALL 5

Hepatocellular Carcinoma Diagnosis and Treatment

ORGANIZING COMMITTEE

Ulrich Beuers, Yung Nio, Jaap Stoker

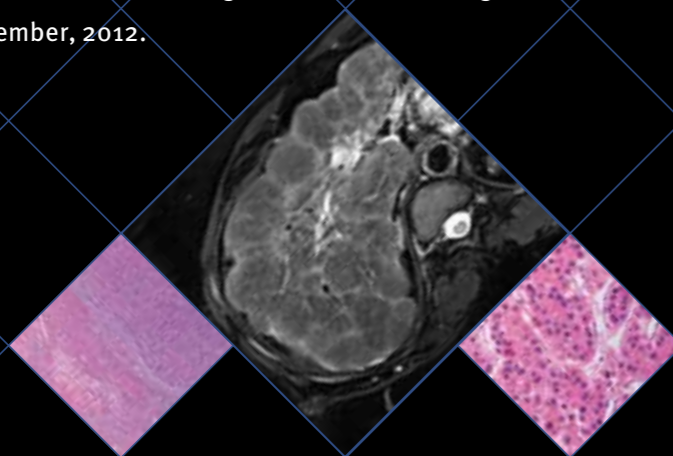


INTRODUCTION

Hepatocellular carcinoma (HCC) is the third most common cause of cancer death worldwide and the most common liver cancer with a fast-rising incidence rate. HCC has become the leading cause of death for patients with cirrhosis. Major risk factors in Europe include cirrhosis due to chronic hepatitis C, chronic hepatitis B, alcohol abuse, and nonalcoholic steatohepatitis (NASH). Additional risk factors are obesity and diabetes mellitus, often associated with NASH. During the last decade, remarkable progress has been made regarding prophylaxis, screening and early recognition of HCC. Novel treatment strategies have been developed in the recent past, which have improved the prognosis for patients with HCC.

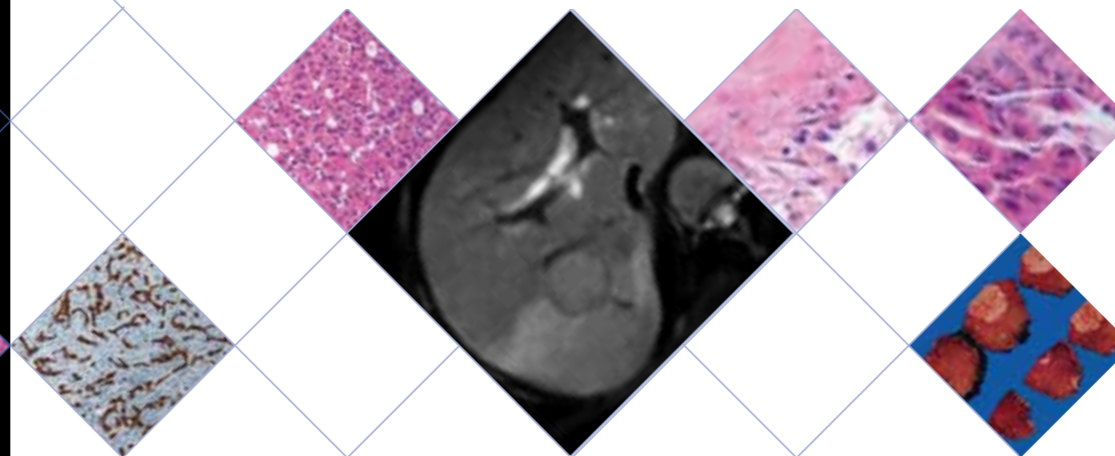
With our symposium on 'Hepatocellular Carcinoma: Diagnosis and Treatment' we aim to provide an update on current knowledge of molecular pathogenesis of HCC, up-to-date diagnostic modalities and actual therapeutic strategies. We are grateful that international and national experts on the field have kindly accepted our invitation to contribute to this symposium. We are looking forward to welcoming you in the AMC on 7 September, 2012.

Ulrich Beuers
Yung Nio
Jaap Stoker



FACULTY

R.J. Bennink ♦ Nuclear Medicine ♦ Academic Medical Center, Amsterdam, NL
U. Beuers ♦ Gastroenterology & Hepatology ♦ Academic Medical Center, Amsterdam, NL
H.C.M. van den Bosch ♦ Radiology ♦ University Medical Center Utrecht, NL
O.M. van Delden ♦ Radiology ♦ Academic Medical Center, Amsterdam, NL
P.R. Galle ♦ Internal Medicine ♦ Johannes Gutenberg University, Mainz, Germany
T.M. van Gulik ♦ Surgery ♦ Academic Medical Center, Amsterdam, NL
C.J.A. Haasbeek ♦ Radiotherapy ♦ VU Medical Center, Amsterdam, NL
P.L.M. Jansen ♦ Gastroenterology & Hepatology ♦ Academic Medical Center, Amsterdam, NL
H.J. Klumpen ♦ Internal Medicine ♦ Academic Medical Center, Amsterdam, NL
M. Meijerink ♦ Radiology ♦ VU Medical Center, Amsterdam, NL
C.Y. Nio ♦ Radiology ♦ Academic Medical Center, Amsterdam, NL
D. Sprengers ♦ Gastroenterology & Hepatology ♦ Erasmus Medical Center, Rotterdam, NL
J. Stoker ♦ Radiology ♦ Academic Medical Center, Amsterdam, NL
V. Vilgrain ♦ Radiology ♦ Hôpital Beaujean, Paris, France
J.N.M. IJzermans ♦ Surgery ♦ Erasmus Medical Center, Rotterdam, NL
J. Zucman-Rossi ♦ AP-HP ♦ Hôpital European George Pompidou, Paris, France



PROGRAMME

9.00	Opening	<i>Jaap Stoker</i>
09.20 – 10.30	Diagnosis <ul style="list-style-type: none">♦ Molecular classification of HCC♦ Regulation of multidrug expression♦ Surveillance	<i>Chair: Ulrich Beuers</i> <i>Jessica Zucman-Rossi</i> <i>Peter Jansen</i> <i>Dave Sprengers</i>
10.30 – 11.00	Coffee break	
11.30 – 12.30	Diagnosis <ul style="list-style-type: none">♦ State of the art MRI♦ Is there a role for PET-CT♦ Panel discussion	<i>Chair: Jaap Stoker</i> <i>Valerie Vilgrain</i> <i>Roel Bennink</i> <i>Ulrich Beuers, Thomas van Gulik,</i> <i>Heinz-Joseph Klumpen, Yung Nio</i> <i>with involvement of faculty</i>
12.30 – 13.30	Lunch	
13.30 – 15.00	Treatment <ul style="list-style-type: none">♦ Surgery (resection)♦ Surgery (transplantation)♦ RFA♦ TACE	<i>Chair: Thomas van Gulik</i> <i>Thomas van Gulik</i> <i>Jan IJzermans</i> <i>Otto van Delden</i> <i>Martijn Meijerink</i>
14.50 – 15.20	Tea break	
15.20 – 16.50	Treatment <ul style="list-style-type: none">♦ New developments in local treatment♦ External radiotherapy: new developments♦ Tailored chemotherapy♦ HCC present guidelines and future management	<i>Chairs: Dick Richel & Peter Jansen</i> <i>Maurice van den Bosch</i> <i>Niels Haasbeek</i> <i>Peter Galle</i> <i>Ulrich Beuers</i>
16.50	Closure	<i>Jaap Stoker</i>
17.00	Cocktails	